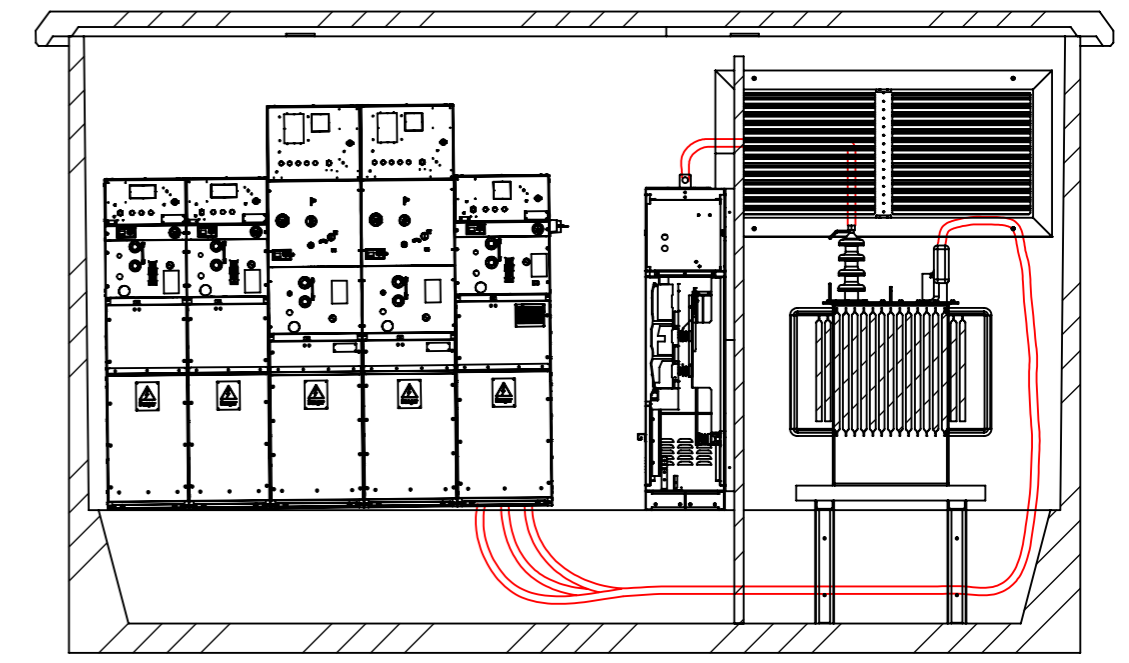
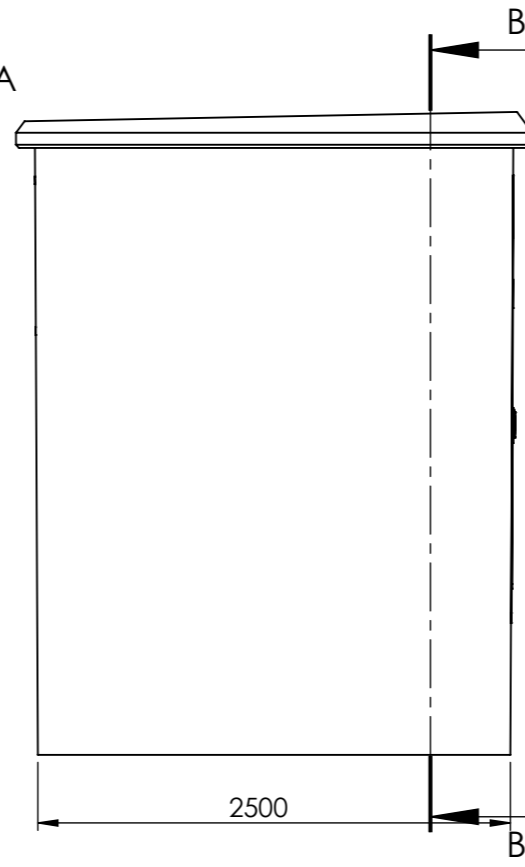
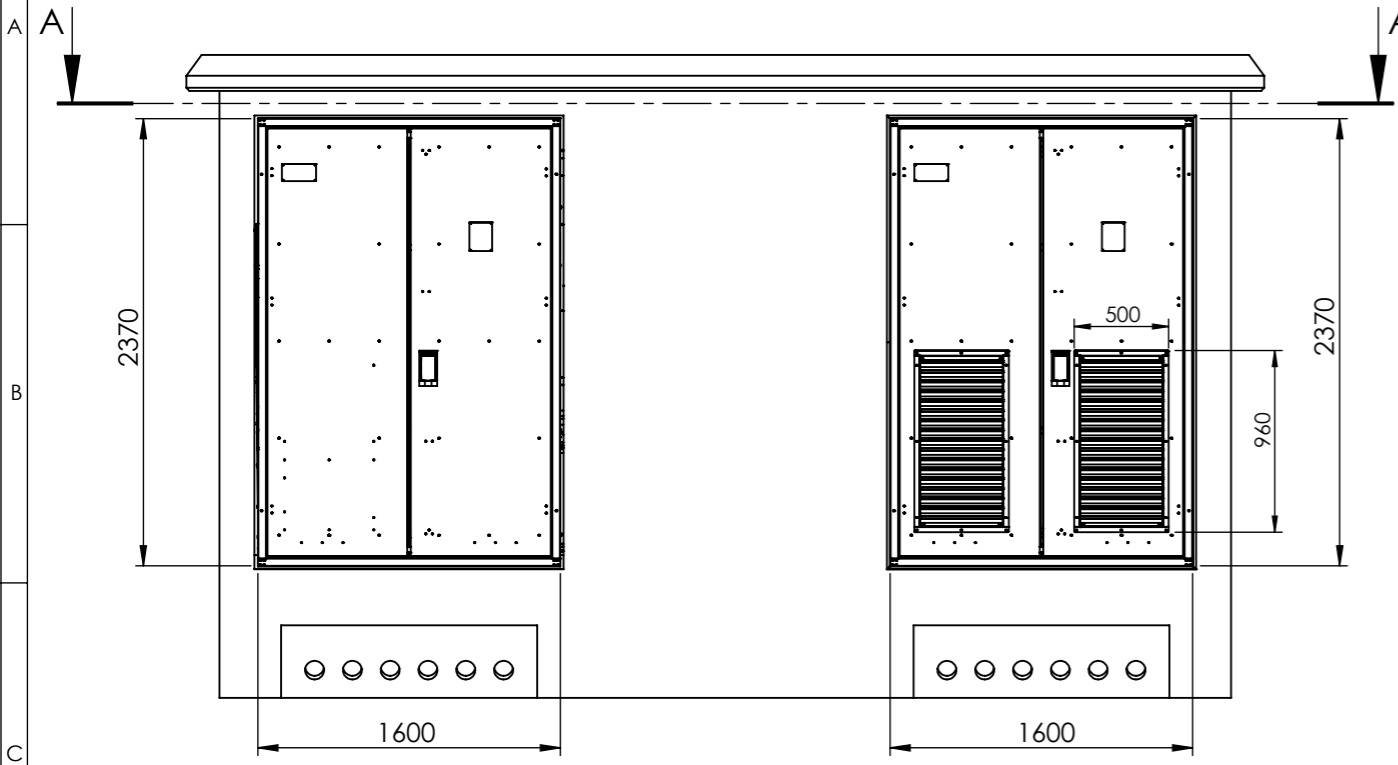
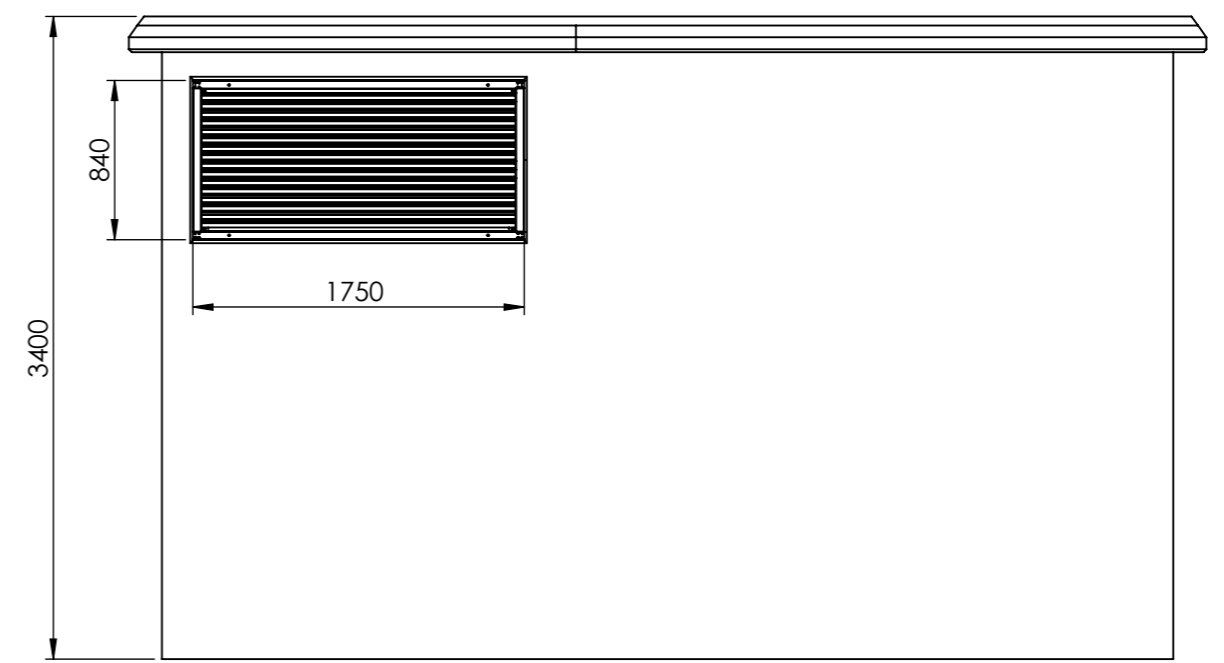
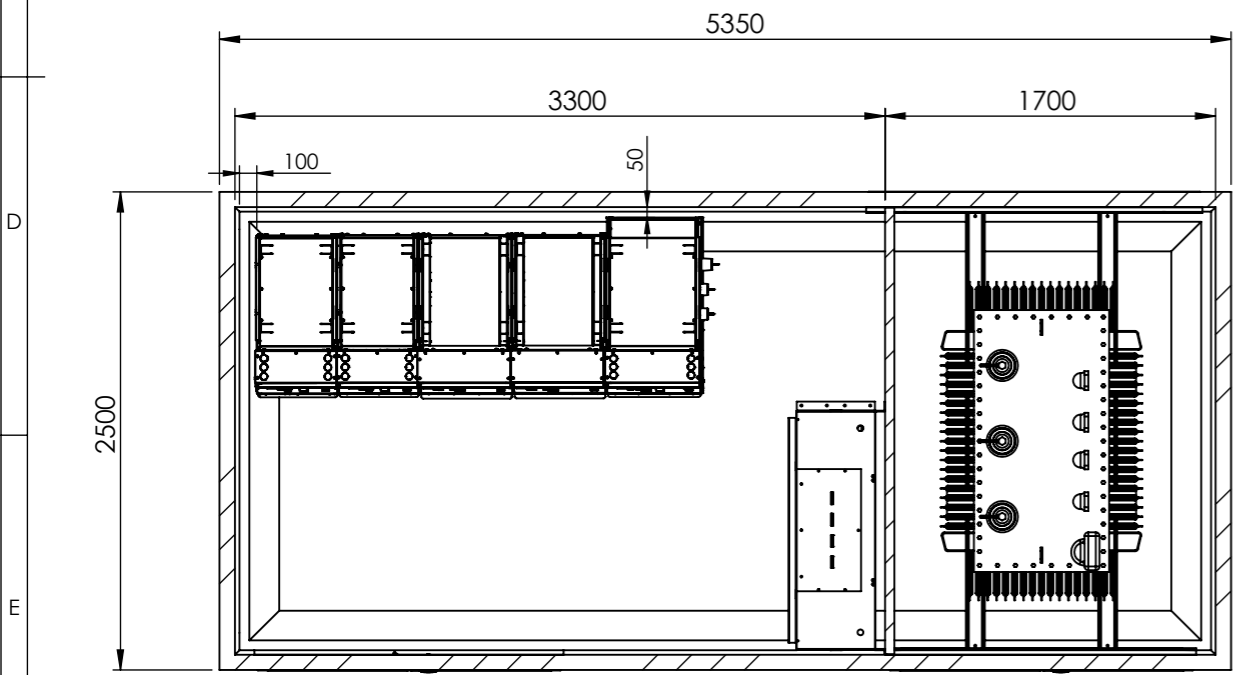


Revizyonlar-Revisions				
No	Tarih-Date	Açıklama-Description	İsim-Name	İmza-Signature



SECTION B-B
SCALE 1 : 40



NOTLAR

- AKSİ BELİRTİLMEDİKÇE;
 - ÖLÇÜLER;
 - MİLİMETREDİR.
 - KAPLAMA SONRASIDIR.
 - TOLERANS SINIFI ISO 2768-mH
 - YÜZEY PÜRÜZLÜLÜĞÜ Ra 3,2
 - METRİK DİŞLER DIN 376'YA UYACAKTIR.
 - KEŞKİN KOŞELERE İZİN VERİLMEZ.
 - KOŞELERE 0,2x45° PAH KIRILACAKTIR.
 - ÇAFAKLARA İZİN VERİLMEZ.
- KALİTE TEMİN İSTEKLERİ
 - MAZEME SERTİFİKASI
 - KAPLAMA SERTİFİKASI
 - Ø İLE İŞARETLENMİŞ ÖLÇÜLER
 - GEOMETRİK ÖLÇÜ TOLERANSLAR
 - BELİRTİLEN EK İSTEKLER

NOTES

- UNLESS OTHERWISE SPECIFIED;
 - DIMENSIONS ARE;
 - IN MILLIMETERS.
 - AFTER SURFACE OPERATIONS
 - I.A.W. ISO 2768-mH
 - SURFACE ROUGHNESS Ra 3,2
 - METRIC THREADS ARE I.A.W. DIN 376
 - SHARP CORNERS ARE NOT ALLOWED
 - BROKEN EDGES to 0,2x45° CHAMFER
 - BURRS ARE NOT ALLOWED
- QUALITY ASSURANCE PROVISIONS
 - CERTIFICATE OF MATERIAL
 - CERTIFICATE OF SURFACE OPERATIONS
 - DIMENSIONS GIVEN IN Ø
 - GEOMETRIC DIMENSIONS & TOLER.
 - SUPPLEMENTARY PROVISIONS

ANMA GÜCÜ:1000kVA.

Kaplama - Coating:	Durum-Status	TASARIM AŞAMASINDA	Tarih-Date	İmza-Signature	SFA ELECTRIC
Kalınlık-Thickness:	Tasarlayan-Designed By	N.ÜSTÜNDAĞ			
Boya-Paint:	Kontrol-Checked By				SAP No
Yüzey Alanı-Surface Area:	Çizen-Drawn By				Sayfa-Sheet 1/1 A3
401514984.92 mm ²	Onay-Approved By				Ölçek-Scale 1:100
Ağırlık-Weight:	Malzeme-Material:	Parça Adı-Part Name	SBK-5350 (İCTEN İSLETMELİ)		
	Material <not specified>	Parça No-Part Number	SFA-SBK		