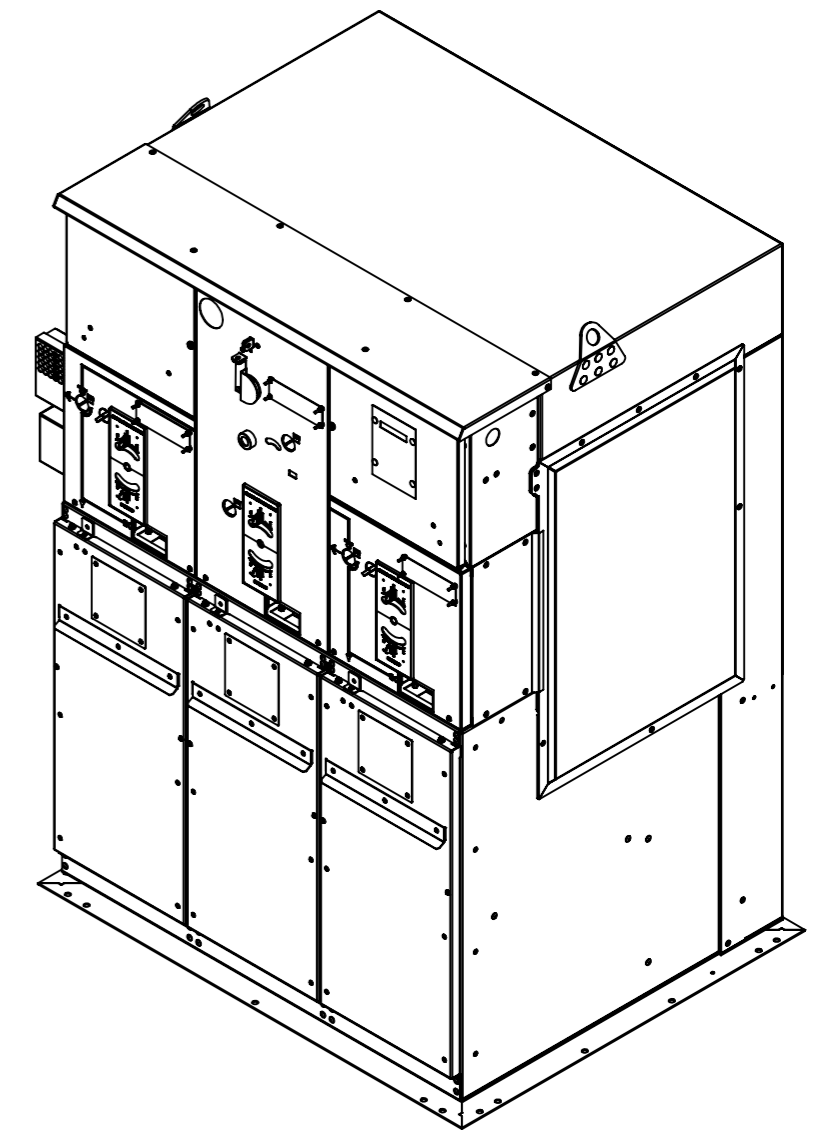
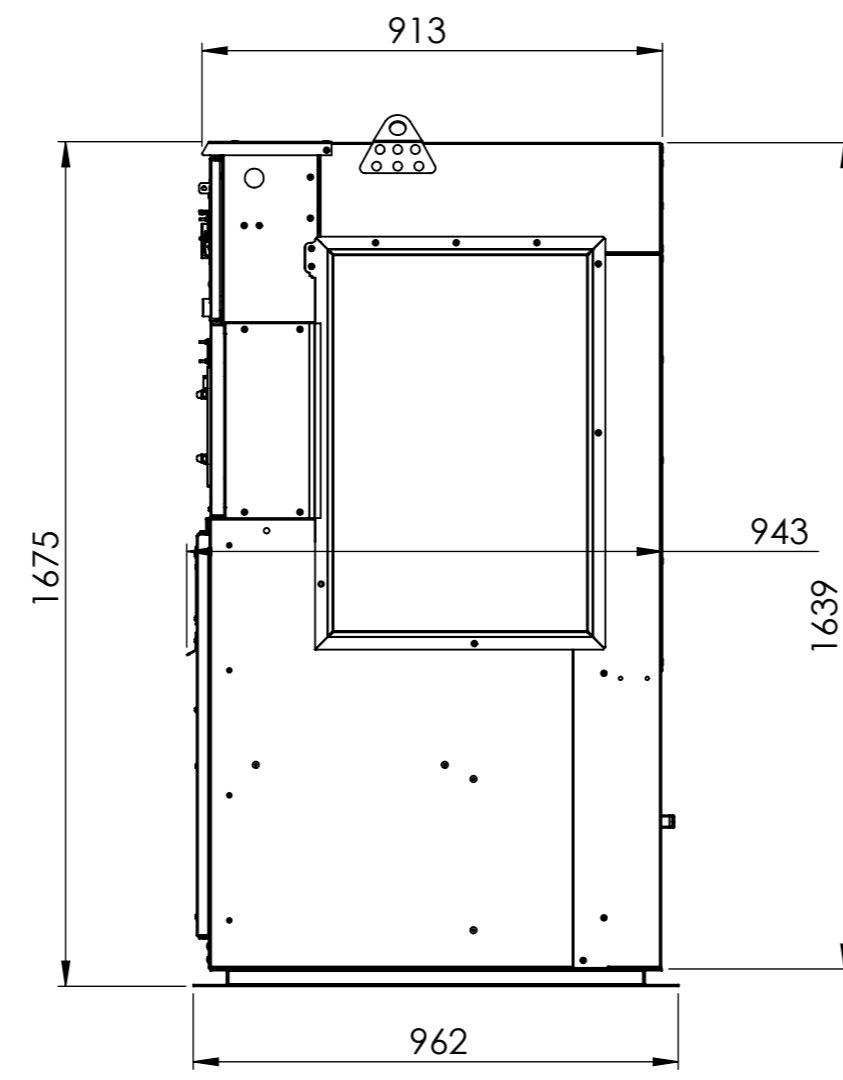
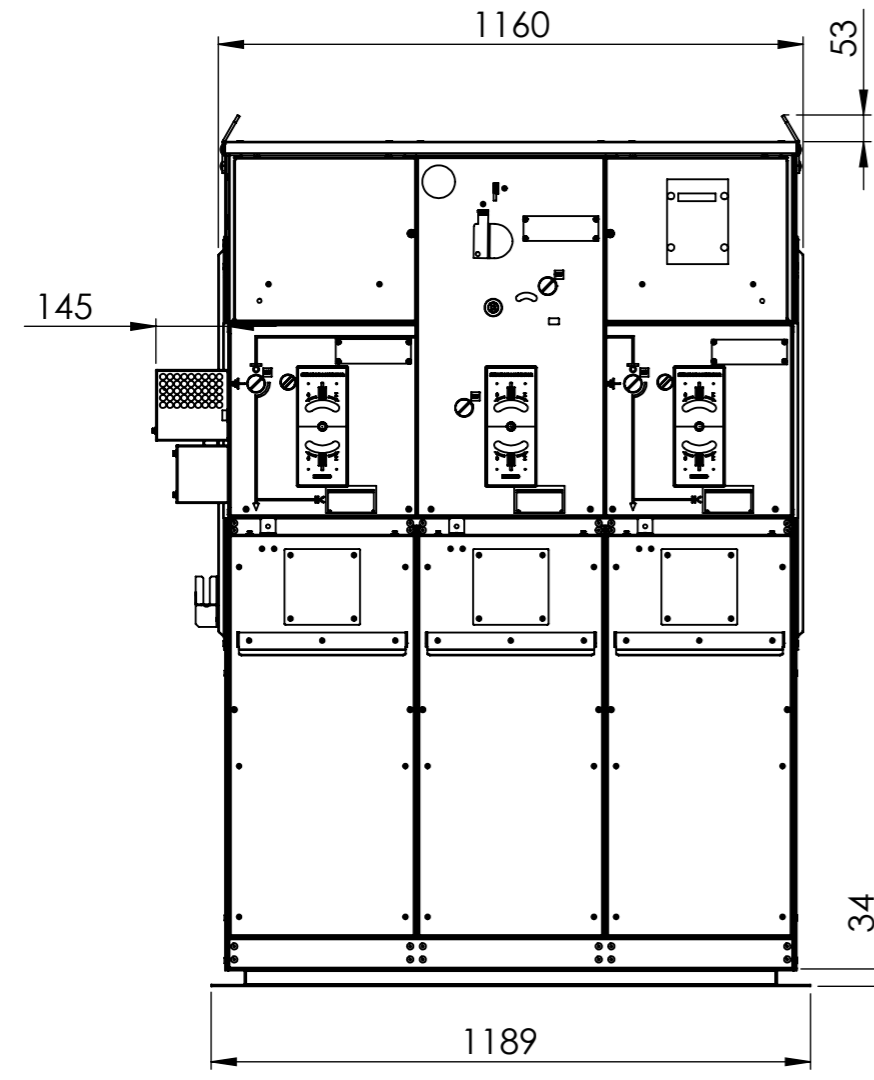


Revizyonlar-Revisions				
No	Tarih-Date	Açıklama-Description	İsim-Name	İmza-Signature



NOTLAR

- AKSİ BELİRTİLMEYİNCİYE;
 - ÖLÇÜLER;
 - MİLİMETREDİR.
 - KAPLAMA SONRASIDIR.
 - TOLERANS SINIFI ISO 2768-mH
 - YÜZEY PÜRÜZLÜLÜĞÜ Ra 3,2
 - METRİK DİŞLER DİN 376'YA UYACAKTIR.
 - KEŞKİN KOŞELERE İZİN VERİLMEZ.
 - KOŞELERE 0,2x45° PAH KIRILACAKTIR.
 - ÇAĞPAKLARA İZİN VERİLMEZ.
- KALİTE TEMİN İSTEKLERİ
 - MALZEME SERTİFİKASI
 - KAPLAMA SERTİFİKASI
 - Ø İLE İŞARETLENMİŞ ÖLÇÜLER
 - GEOMETRİK ÖLÇÜ TOLERANSLAR
 - BELİRTİLEN EK İSTEKLER

NOTES

- UNLESS OTHERWISE SPECIFIED;
 - DIMENSIONS ARE;
 - IN MILLIMETERS.
 - AFTER SURFACE OPERATIONS
 - I.A.W. ISO 2768-mH
 - SURFACE ROUGHNESS Ra 3,2
 - METRIC THREADS ARE I.A.W. DİN 376
 - SHARP CORNERS ARE NOT ALLOWED
 - BROKEN EDGES to 0,2x45° CHAMFER
 - BURRS ARE NOT ALLOWED
- QUALITY ASSURANCE PROVISIONS
 - CERTIFICATE OF MATERIAL
 - CERTIFICATE OF SURFACE OPERATIONS
 - DIMENSIONS GIVEN IN Ø
 - GEOMETRIC DIMENSIONS & TOLER.
 - SUPPLEMENTARY PROVISIONS

Kaplama - Coating:

Kalınlık-Thickness: μ
Boya-Paint:Yüzey Alanı-Surface Area: mm^2

Durum-Status	TASARIM AŞAMASINDA	Tarih-Date	İmza-Signature	SFA ELECTRIC
Tasarlayan-Designed By	Ş.ÖZKAN			
Kontrol-Checked By				SAP No
Çizen-Drawn By	R.KALKAN			Sayfa-Sheet 1/1 A3
Onay-Approved By				Ölçek-Scale 1:20
Malzeme-Material:	Parça Adı-Part Name	SFA-RM17.5 SBS INDOOR		
	Parça No-Part Number	19MR0075-SFA INDOOR		
Ağırlık-Weight: $gr.$				