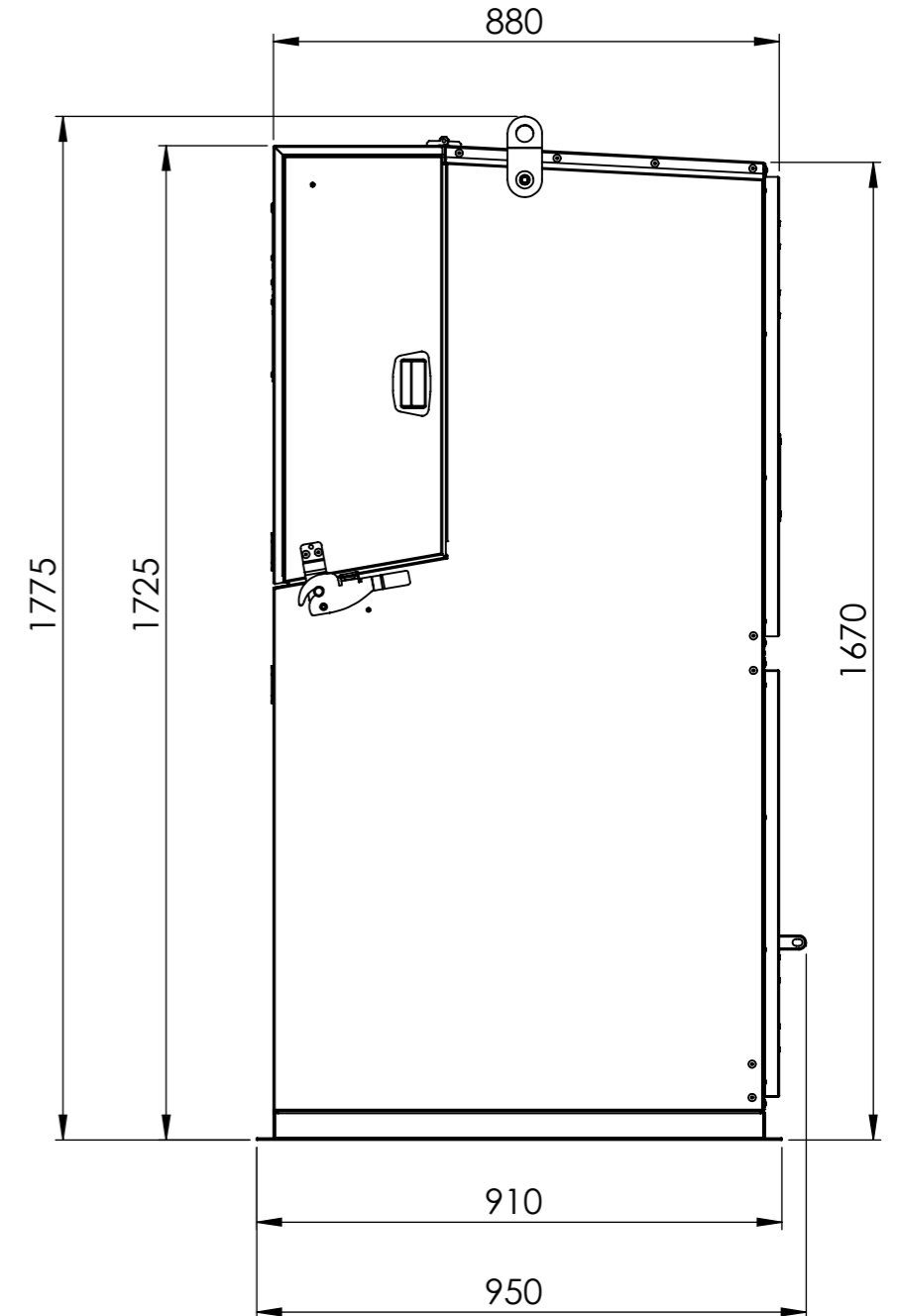
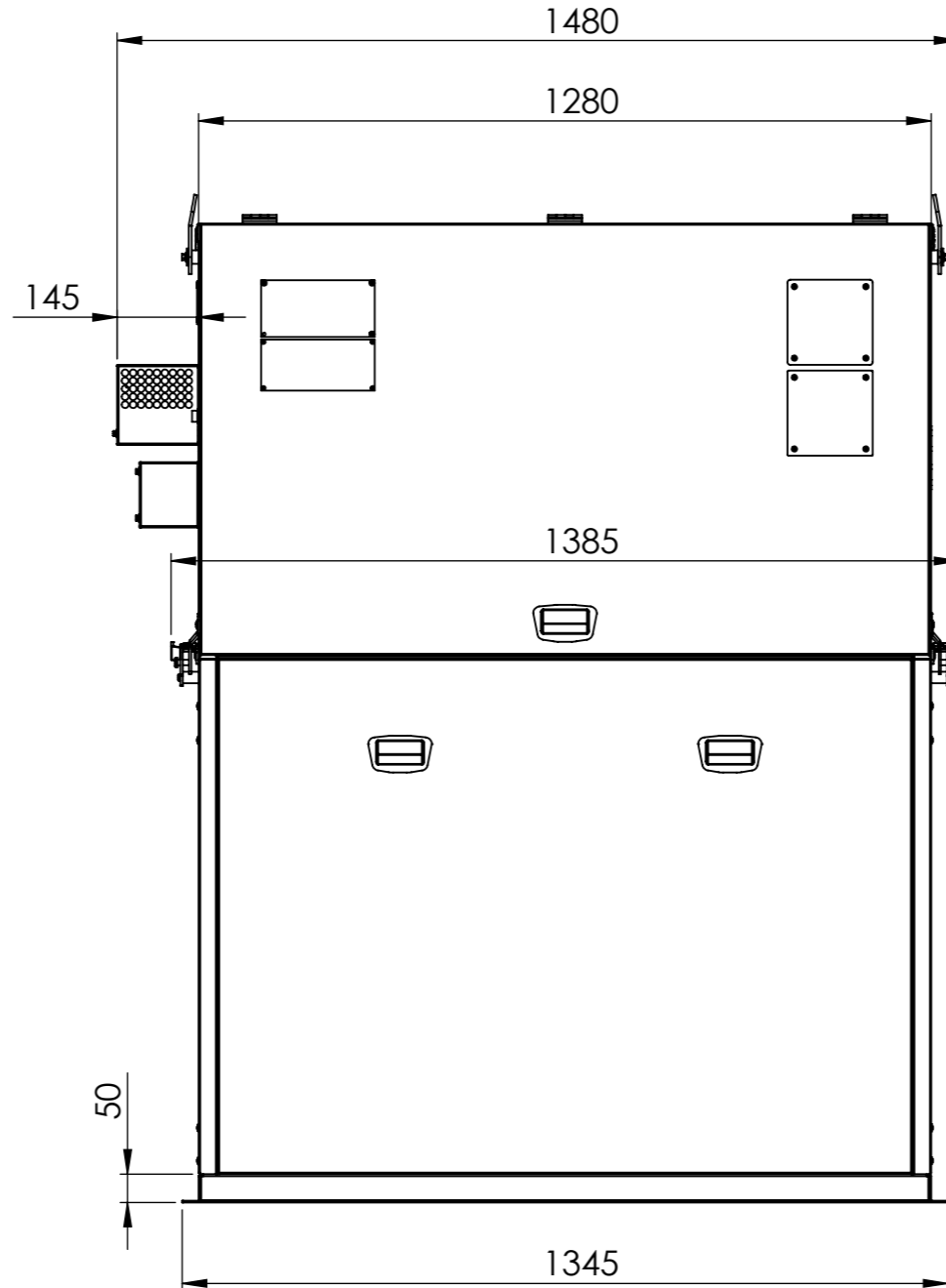
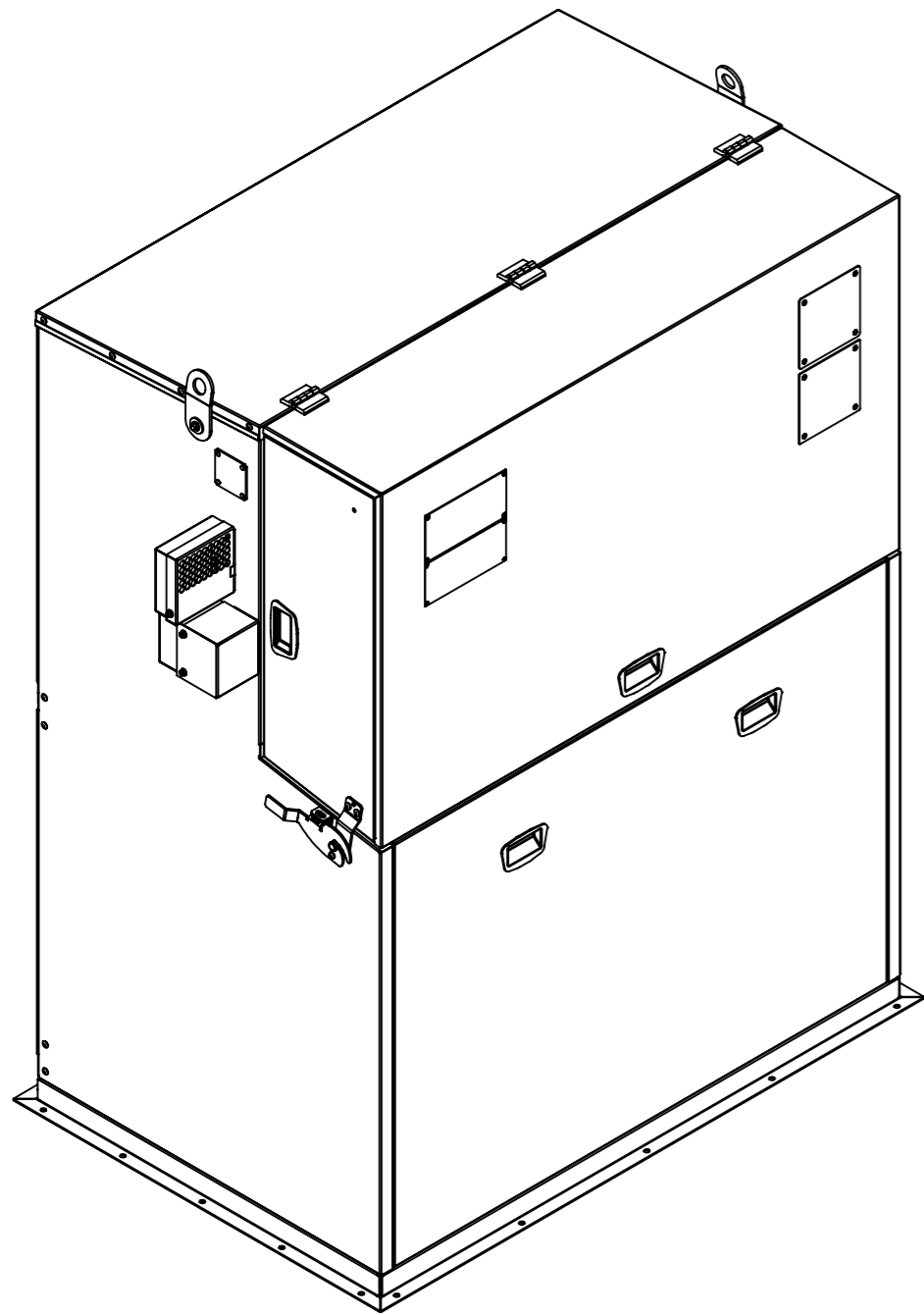


No	Tarih-Date	Açıklama-Description	İsim-Name	İmza-Signature



NOTLAR

- AKSİ BELİRTİLMEYİNCİYE;
 - ÖLÇÜLER;
 - MİLİMETREDİR.
 - KAPLAMA SONRASIDIR.
 - TOLERANS SINIFI ISO 2768-mH
 - YÜZEY PÜRÜZLÜĞÜ Ra 3,2
 - METRİK DİŞLER DİN 376'YA UYACAKTIR.
 - KEŞKİN KOŞELERE İZİN VERİLMEZ.
 - KOŞELERE 0,2x45° PAH KIRILACAKTIR.
 - ÇAĞAKLARA İZİN VERİLMEZ.
- KALİTE TEMİN İSTEKLERİ
 - MALZEME SERTİFİKASI
 - KAPLAMA SERTİFİKASI
 - ÖLÇÜLER İLE İŞARETLENMİŞ ÖLÇÜLER
 - GEOMETRİK ÖLÇÜ TOLERANSLAR
 - BELİRTİLEN EK İSTEKLER

NOTES

- UNLESS OTHERWISE SPECIFIED;
 - DIMENSIONS ARE;
 - IN MILLIMETERS.
 - AFTER SURFACE OPERATIONS
 - I.A.W. ISO 2768-mH
 - SURFACE ROUGHNESS Ra 3,2
 - METRIC THREADS ARE I.A.W. DIN 376
 - SHARP CORNERS ARE NOT ALLOWED
 - BROKEN EDGES to 0,2x45° CHAMFER
 - BURRS ARE NOT ALLOWED
- QUALITY ASSURANCE PROVISIONS
 - CERTIFICATE OF MATERIAL
 - CERTIFICATE OF SURFACE OPERATIONS
 - DIMENSIONS GIVEN IN WITH MARKED DIMENSIONS
 - GEOMETRIC DIMENSIONS & TOLER.
 - SUPPLEMENTARY PROVISIONS

Kaplama - Coating:

Kalınlık-Thickness:
Boya-Paint:Yüzey Alanı-Surface Area:
79278642.58 mm²

Durum-Status TASARIM AŞAMASINDA Tarih-Date İmza-Signature

Tasarlayan-Designed By **Ş.ÖZKAN**

Kontrol-Checked By

Çizen-Drawn By **R.KALKAN**

Onay-Approved By

Malzeme-Material:

Material <not specified>

Ağırlık-Weight: **SW-Mass**

Parça Adı-Part Name

Parça No-Part Number

SFA ELECTRIC

SAP No

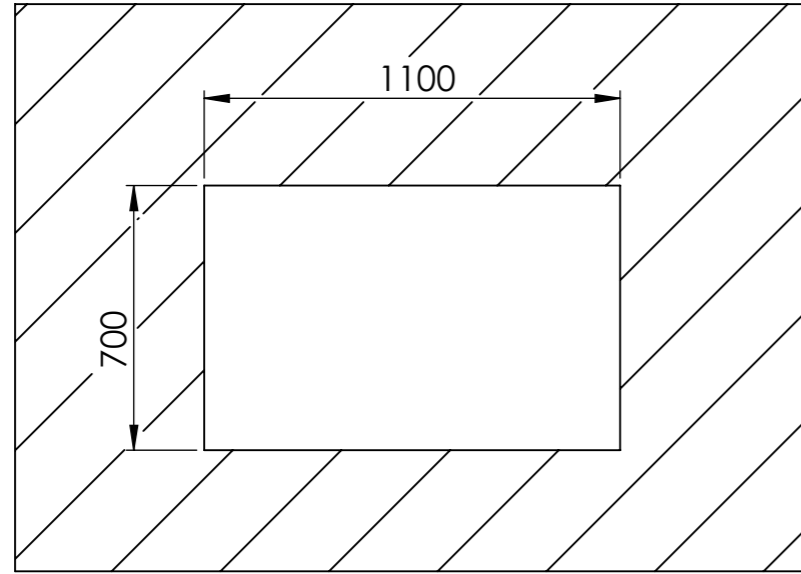
Sayfa-Sheet 1/3 A3

Ölçek-Scale 1:20

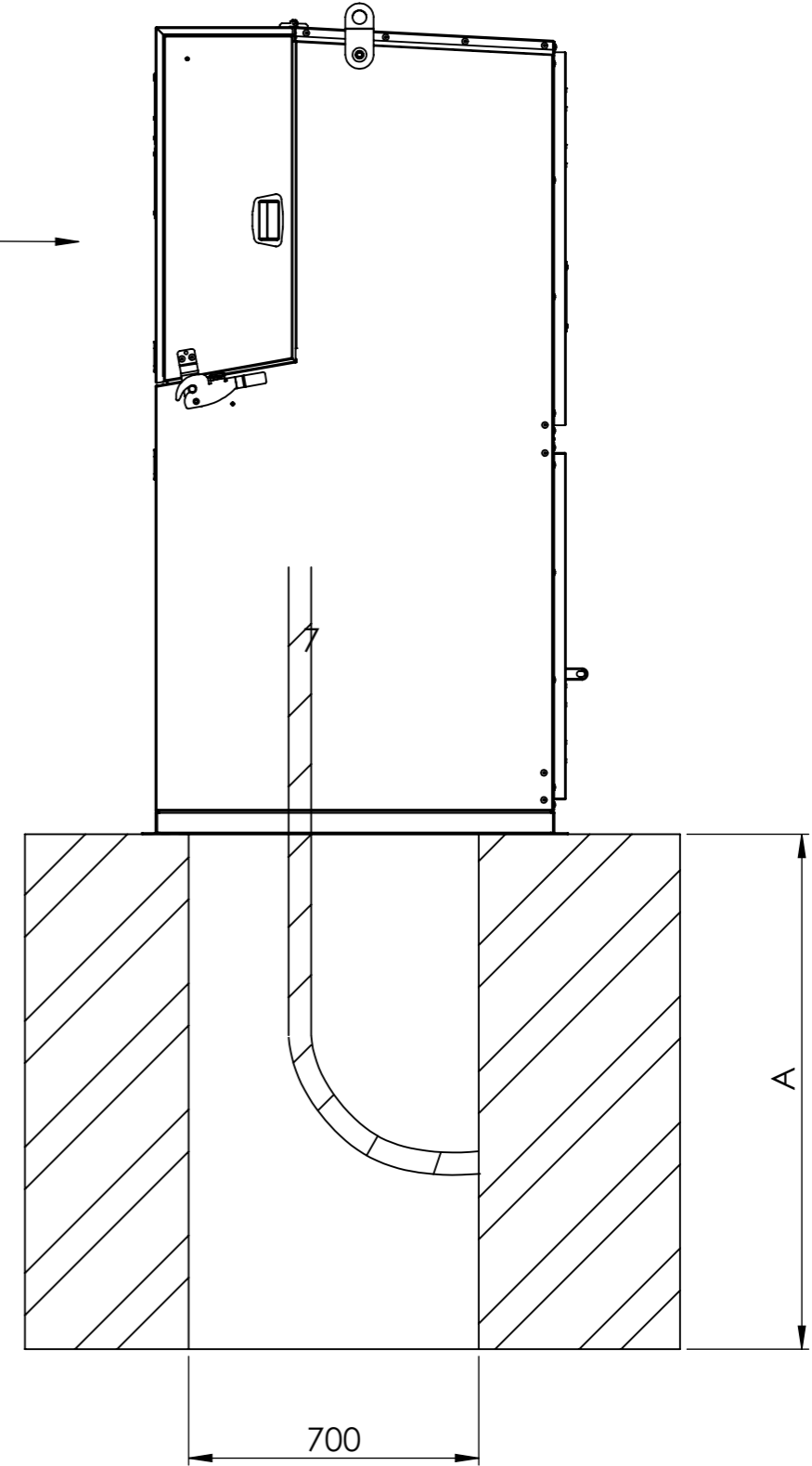
SFA-RM17.5 SBS OUTDOOR

S18MR0410-SFA

The recommended for dimension A is
1200 mm for cable alum 500 mm.sq



Front →



NOTLAR

1. AKSİ BELİRTİLMEDİKÇE;
- 1.1 ÖLÇÜLER;
 - MİLMETREDİR.
 - KAPLAMA SONRASIDIR.
 - TOLERANS SINIFI ISO 2768-mH
- 1.2 YÜZEY PÜRÜZLÜLÜĞÜ Ra 3,2
- 1.3 METRİK DİŞLER DİN 376'YA UYACAKTIR.
- 1.4 KEŞKİN KOŞELERE İZİN VERİLMEZ.
- 1.5 KOŞELERE 0,2x45° PAH KIRILACAKTIR.
- 1.6 ÇAPAKLARA İZİN VERİLMEZ.
2. KALİTE TEMİN İSTEKLERİ
- 2.1 MALZEME SERTİFİKASI
- 2.2 KAPLAMA SERTİFİKASI
- 2.3 ○ İLE İŞARETLENMİŞ ÖLÇÜLER
- 2.4 GEOMETRİK ÖLÇÜ TOLERANSLAR
- 2.5 BELİRTİLEN EK İSTEKLER

NOTES

1. UNLESS OTHERWISE SPECIFIED;
- 1.1 DIMENSIONS ARE;
 - IN MILIMETERS.
 - AFTER SURFACE OPERATIONS
 - I.A.W. ISO 2768-mH
- 1.2 SURFACE ROUGHNESS Ra 3,2
- 1.3 METRIC THREADS ARE I.A.W. DİN 376
- 1.4 SHARP CORNERS ARE NOT ALLOWED
- 1.5 BROKEN EDGES to 0,2x45° CHAMFER
- 1.6 BURRS ARE NOT ALLOWED
2. QUALITY ASSURANCE PROVISIONS
- 2.1 CERTIFICATE OF MATERIAL
- 2.2 CERTIFICATE OF SURFACE OPERATIONS
- 2.3 DIMENSIONS GIVEN IN ○
- 2.4 GEOMETRIC DIMENSIONS & TOLER.
- 2.5 SUPPLEMENTARY PROVISIONS

Kaplama - Coating:

Kalınlık-Thickness: μ
Boya-Paint:

Yüzey Alanı-Surface Area:
79278642.58 mm²

Durum-Status

TASARIM AŞAMASINDA

Tarih-Date

İmza-Signature

Tasarlayan-Designed By

Ş.ÖZKAN

Kontrol-Checked By

R.KALKAN

Çizen-Drawn By

R.KALKAN

Onay-Approved By

Malzeme-Material:

Material <not specified>

Parça Adı-Part Name

SFA-RM17.5 SBS OUTDOOR

Parça No-Part Number

S18MR0410-SFA

Ağırlık-Weight:

SW-Mass@Part.SLDPRT

SFA ELECTRIC

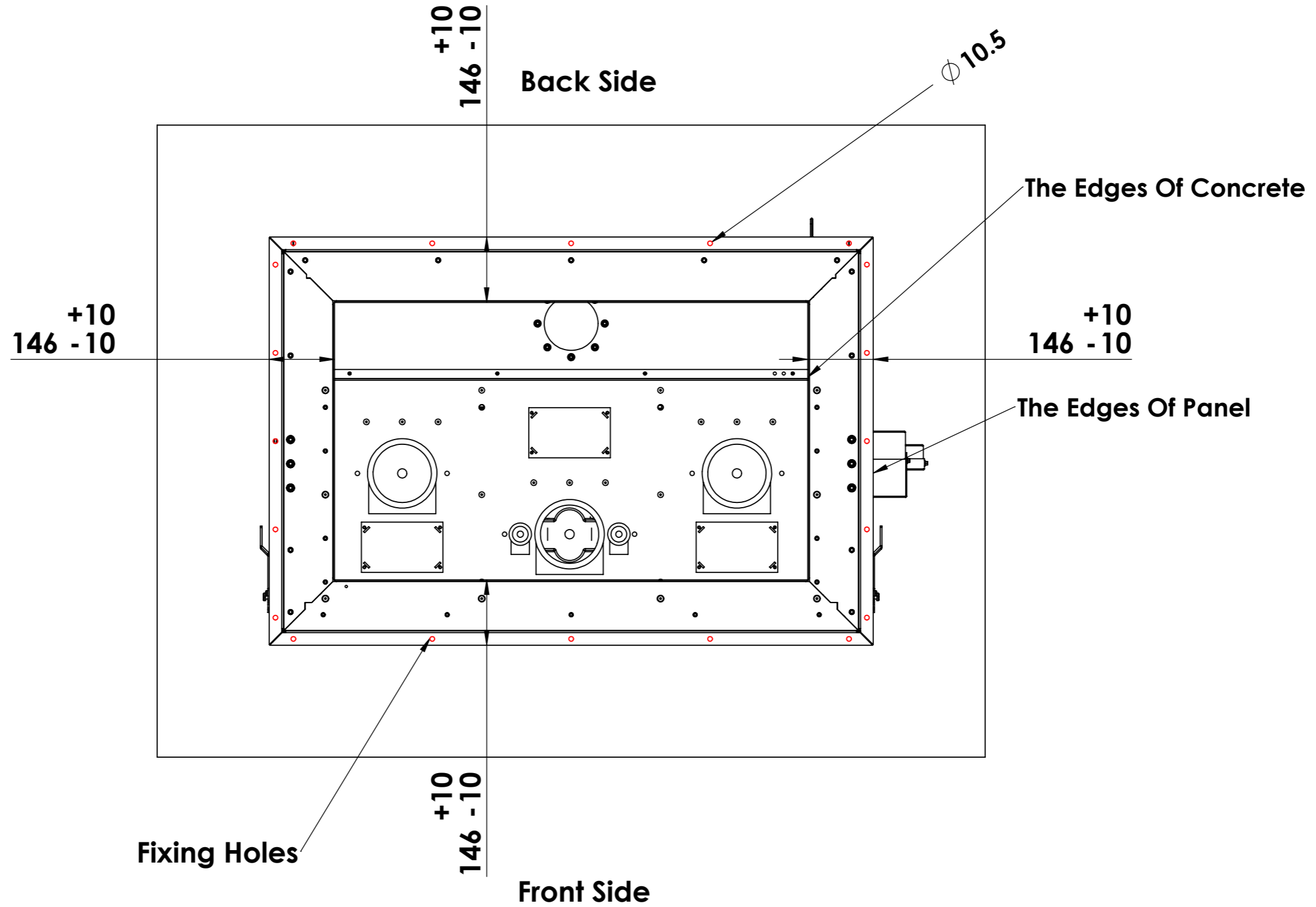
SAP No

Sayfa-Sheet 2/3 A3

Ölçek-Scale 1:20

SFA-RM17.5 SBS OUTDOOR

S18MR0410-SFA

**NOTLAR**

1. AKSİ BELİRTİLMEDİKÇE;
- 1.1 ÖLÇÜLER;
 - MİLMETREDİR.
 - KAPLAMA SONRASIDIR.
 - TOLERANS SINIFI ISO 2768-mH
- 1.2 YÜZEY PÜRÜZLÜĞÜ Ra 3,2
- 1.3 METRİK DİŞLER DİN 376'YA UYACAKTIR.
- 1.4 KEŞKİN KOŞELERE İZİN VERİLMEZ.
- 1.5 KOŞELERE 0.2x45° PAH KIRILACAKTIR.
- 1.6 ÇAFAKLARA İZİN VERİLMEZ.
2. KALİTE TEMİN İSTEKLERİ
 - 2.1 MALZEME SERTİFİKASI
 - 2.2 KAPLAMA SERTİFİKASI
 - 2.3 İLE İŞARETLENMİŞ ÖLÇÜLER
 - 2.4 GEOMETRİK ÖLÇÜ TOLERANSLAR
 - 2.5 BELİRTİLEN EK İSTEKLER

NOTES

1. UNLESS OTHERWISE SPECIFIED;
- 1.1 DIMENSIONS ARE;
 - IN MILLIMETERS.
 - AFTER SURFACE OPERATIONS
 - I.A.W. ISO 2768-mH
- 1.2 SURFACE ROUGHNESS Ra 3,2
- 1.3 METRIC THREADS ARE I.A.W. DİN 376
- 1.4 SHARP CORNERS ARE NOT ALLOWED
- 1.5 BROKEN EDGES to 0.2x45° CHAMFER
- 1.6 BURRS ARE NOT ALLOWED
2. QUALITY ASSURANCE PROVISIONS
 - 2.1 CERTIFICATE OF MATERIAL
 - 2.2 CERTIFICATE OF SURFACE OPERATIONS
 - 2.3 DIMENSIONS GIVEN IN
 - 2.4 GEOMETRIC DIMENSIONS & TOLER.
 - 2.5 SUPPLEMENTARY PROVISIONS

Kaplama - Coating:

Kalınlık-Thickness:
Boya-Paint:Yüzey Alanı-Surface Area:
79278642.58 mm²

Durum-Status

Tasarlayan-Designed By

Kontrol-Checked By

Çizen-Drawn By

Onay-Approved By

Malzeme-Material:

Material <not specified>

Parça Adı-Part Name

Parça No-Part Number

Ağırlık-Weight:

SW-MassPart.SLDPRT

TASARIM AŞAMASINDA

Tarih-Date

İmza-Signature

SAP No

Sayfa-Sheet

3/3

A3

Ölçek-Scale

1:20

İmza-Signature

SAP No

Sayfa-Sheet

3/3

A3

Ölçek-Scale

1:20

SFA ELECTRIC

SFA-RM17.5 SBS OUTDOOR

S18MR0410-SFA